



[elevate to the highest power]<sup>PM</sup>



ACCESSORIES

products

> FIND PRODUCT BY SERIES

BY RANGE:

BY SERIE:

SEARCH

> FIND PRODUCT BY REQUIREMENT

EXTENSION:

 m

CAPACITY:

 Kg

TYPE OF VEHICLE:

SEARCH

19024P

CLASSIC

TECHNICAL SPECIFICATIONS



Maximum loading moment

tm	19,9
Knm	176



Hydraulic system

l/min	45
Mpa	28,5



Slewing system

Crane weight	400
--------------	-----



Crane weight

ST	2490
----	------



Width

Width	2450
-------	------



Height

Height	2220
--------	------

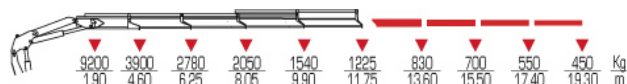


Depth

Depth	880
-------	-----



Load chart



The manual extensions (red extensions) are not installed on the base crane

EQUIPMENT AND ACCESSORIES

STANDARD:

Slewing by rack	LC execution	Hydraulic outrigger booms	Extention sequence boom
-----------------	--------------	---------------------------	-------------------------

OPTIONAL:

Multifunction radio control	Oil cooler	Poportional hydraulic control valve block	Hydraulic winch on crane
Stand up control	Top seat	Hose reel	Hose support for activations

BACK



CONTACT