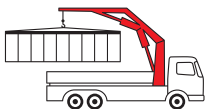


PK 33002-EH

High Performance

PALFINGER CRANE



KTL
protected

**Paltronic
50**
controlled

RRC
Radio Remote Control
operated

ISC
Integrated Stability Control
monitored

AOS
Active Oscillation Suppression
inside

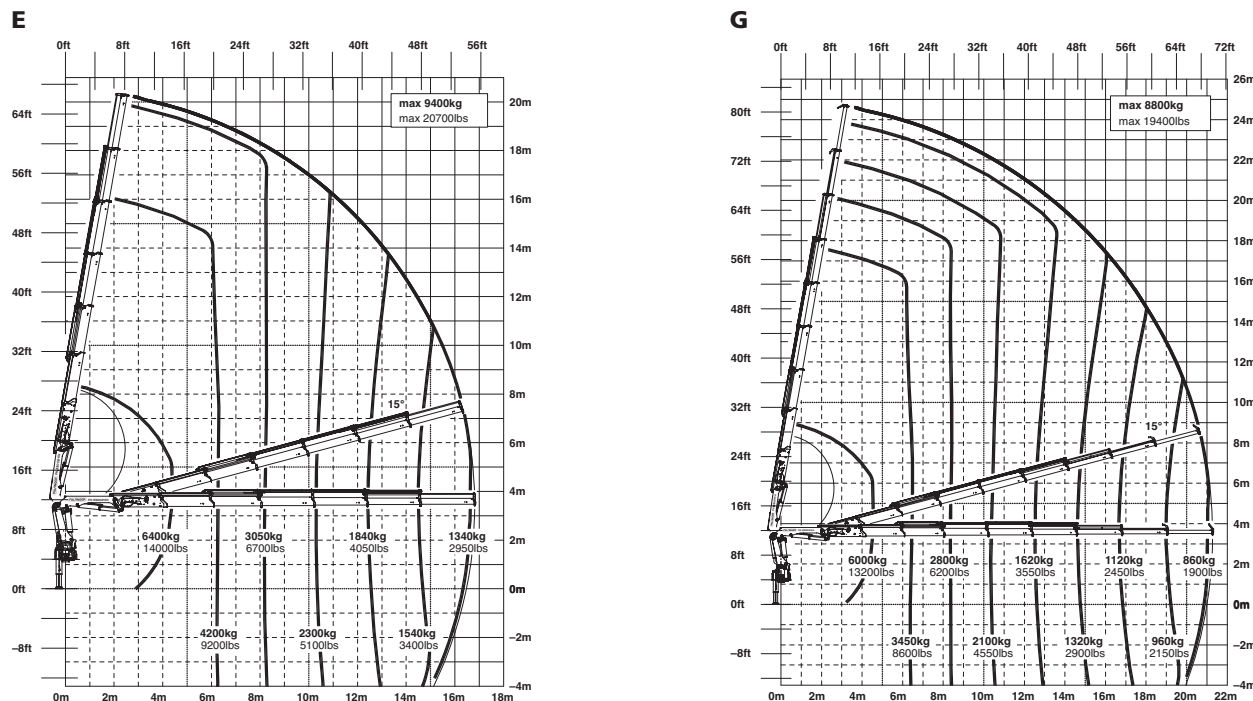
DPS^{plus}
Dual Power System
activated

Perfection in design and manoeuvrability

The PK 33002 EH with its well-proven E-HPLS technology combines power, comfort, and safety in exemplary fashion. Its design is functional. Its exceptional movement geometry expands its horizon of duties. With the maintenance-free boom system, the crane couldn't be better prepared for a long and carefree life. – What operator wouldn't be happy?

Uncompromising High Performance equipment

PK 33002 EH High Performance



Technical Specifications (EN 12999 H1-B3)

| | | |
|------------------------------|-------------------|---------------|
| Max. lifting moment | 31.1 mt/305.0 kNm | 224940 ft.lbs |
| Max. lifting capacity | 10000 kg/98.1 kN | 22050 lbs |
| Max. hydraulic outreach | 21.3 m | 69' 11" |
| Max. manual outreach | 23.3 m | 76' 5" |
| Max. outreach (with fly jib) | 29.4 m | 96' 5" |
| Slewing angle | 400 ° | |

| | | |
|-------------------------------|-------------------------------|--------------------------------------|
| Slewing torque | 3.2 mt/31.4 kNm | 23130 ft.lbs |
| Stabilizer spread | std. 5.6 m/18' 4" | max. 7.4 m/24' 3" |
| Fitting space required (std.) | 1.01 m | 3' 4" |
| Width folded | 2.53 m | 8' 3" |
| Max. operating pressure | 350 bar | 5075 psi |
| Recommended pump capacity | from 80 l/min to 100 l/min | 21.1 US gal./min 26.4 US gal./min |
| Dead weight (std.) | 2876 kg | 6340 lbs |

