



We build a better future

■ Photo may include optional equipment.

20D/25D/30D/33D-7E

DIESEL FORKLIFT TRUCKS Environmental - Friendly

FORKLIFT *Excellent* Model

20D/25D/30D/33D -7E

New criterion of Forklift Trucks

Hyundai introduces a new line of 7E-series diesel forklift trucks. Excellent power and performance make your business more profitable.



■ Photo may include optional equipment.



High Power & Performance

Powerful Engine

KUBOTA V3600 Engine

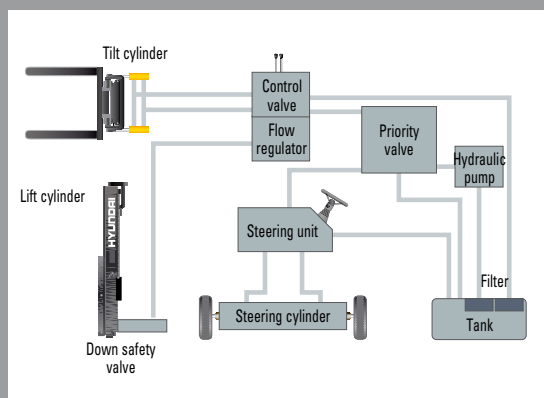
The market approved quality of the Kubota V3600 engine ensures an incomparable performance, durability and additional value to the machine. 48kW of the engine is more than enough to suit any work, with a standard as well as a special attachment equipped machine. (EPA Int.Tier-4 / EU Stage IIIA Certified)

48 kW / 2,300 rpm



State-of-the-art hydraulic system

The latest designed, large-capacity hydraulic system including a low-noise control valve shortens reaction time during operation and improves both efficiency and durability.



Fast and stable performance

Being able to quickly raise and lower the mast, as well as tilting forward and backward, the truck provides you the best operational conditions during loading/unloading operations. When the truck is fully loaded, mast lowering speed is carefully controlled to ensure safety by the down control valve.

The new master on your job-site!

Smooth running, efficient and ergonomically designed, 20/25/30/33D-7E series are made to meet your needs.



■ Photo may include optional equipment.

Faster travel speed & Grade-ability

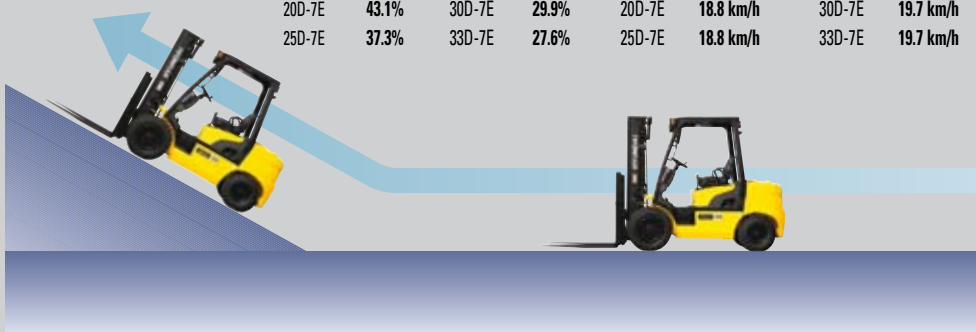
The powerful high-output engine provides greater acceleration, better grade-ability and faster travel speed on any tough terrain or slope.

Grade-ability (Loaded)

20D-7E	43.1%	30D-7E	29.9%
25D-7E	37.3%	33D-7E	27.6%

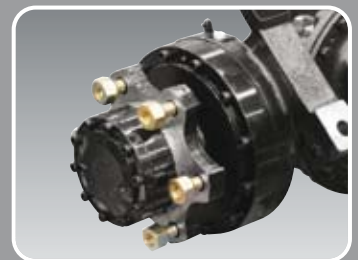
Travel speed (Unloaded)

20D-7E	18.8 km/h	30D-7E	19.7 km/h
25D-7E	18.8 km/h	33D-7E	19.7 km/h



Increased mast tilting angle

Utilizing the mast tilting angle of 6 degrees forward and 10 degrees backward gives the operator a safe and rapid platform for loading and unloading jobs.



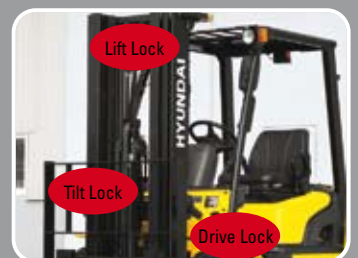
Wet disc brake system

Wet disc brakes improve the brake performance and make your service intervals longer. Enclosed brakes are protected against dust and water.



Fully hydrostatic power steering

A hydraulic steering system always guarantees smooth and flexible steering, preventing overrun and steering wheel kick-back.



OPSS (Operator Presence Sensing System)

Mast tilting, lifting and lowering operation is not possible when the operator is not seated in normal position. (Option)

Comfortable Operation



Adjustable steering wheel

Steering wheel with horn button can be adjusted by a lever on the right-hand side for the most comfortable operator position.



Easy and safe shift lever

A single lever on the left side of the steering column gives the operator fast and easy control of travel direction. The engine can only be started in case of neutral position of this lever.



Multi-function switch lever

A multi-functional switch lever gives easy access to lights and horn.



Quick response of operating control levers

Only minimal operator's effort is required for precise, safe and productive control.



■ Photo may include optional equipment.



Ergonomically positioned pedals

Based on human engineering, the accelerator, brake and inching pedals are optimally positioned for operator's convenience.



Cup holder & console box

Additional storage spaces are located inside the operating space for operator's convenience.

Comfortable Operation!

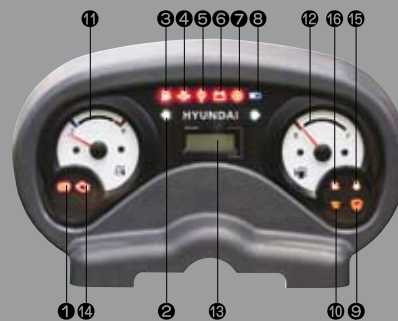
A design based on human engineering relieves fatigue and increases operator's efficiency.



New high visibility for safe operation

The operator is able to work with increased safety and accuracy due to a wider view mast.

Operator friendly gauges and water-resistant monitor panel



- | | |
|---|---------------------------|
| ① Parking brake lamp | ⑨ Water separator lamp |
| ② Directional indicators | ⑩ Pre-heater indicator |
| ③ Fuel warning lamp | ⑪ Water temperature gauge |
| ④ Engine oil warning lamp | ⑫ Fuel gauge |
| ⑤ Transmission oil temperature warning lamp | ⑬ Hour meter |
| ⑥ Battery warning lamp | ⑭ Engine check lamp |
| ⑦ Air filter warning light | ⑮ Seat belt warning |
| ⑧ Working light indicator | ⑯ DPSS warning |

Easily adjustable suspension seat

An attractive and adjustable seat, based on a human engineering design, provides great comfort, safety and durability.



Full-floating overhead guard

Anti-vibration rubbers, installed between the guard and truck frame, reduce the source of vibration and noise while driving. This reduces operator's fatigue and increases safety.



Endurance & Safety

Strong overhead guard

The safety overhead guard meets EEC and ANSI regulations and protects the operator during hazardous jobs.



Parking brake

Ratchet type parking brake requires less effort from the operator to set.



Highly durable split type drive axle

Powershift transmission provides you with fast and quiet travel speed under all heavy load conditions, so boosting your work efficiency.

Safety through high durability!

Safety and durability are priorities in the design of the equipment.



Large footstep & handle

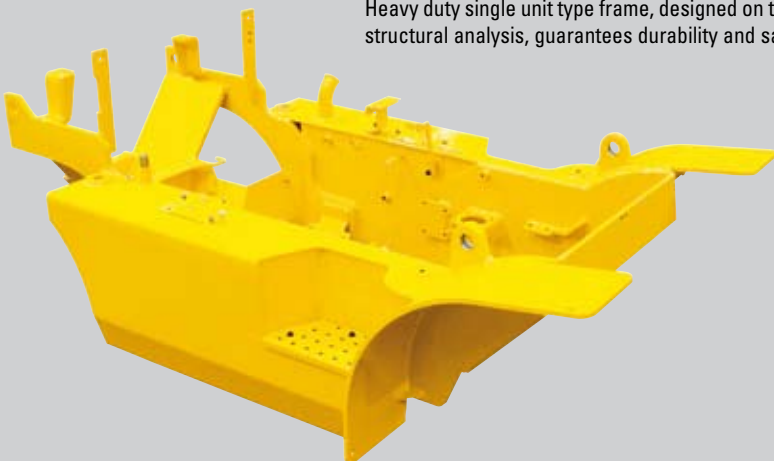
Wide "open" step offers convenience and safety when entering and exiting your truck.



■ Photo may include optional equipment.

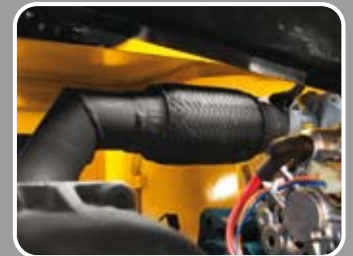
Heavy duty single unit frame

Heavy duty single unit type frame, designed on the basis of accurate structural analysis, guarantees durability and safety.



Easy access to electrical components

Various electric parts are centralized below the dash board resulting in improvement of maintenance.



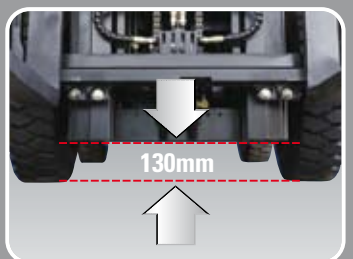
Expansion bellows

The expansion bellows absorbs vibration and reduces noise generated from the exhaust gas to extend the life span.



Bright, protected headlights

Bright, protected headlights are positioned for increased visibility in dark environments.



Ground clearance

The engine and transmission are assembled horizontally and positioned high in the frame to protect valuable components during operations on rugged surface.

High Durability & Easy Maintenance



Electrically monitored air filter

Air cleaner sensor alerts the operator of a restricted air filter so allowing replacement before a potential engine damage occurs.



Easy maintenance oil check

The T/M oil level can be checked easily without any disassembly.



Brake fluid reservoir

Highly visible, easily accessible reservoir makes for quicker daily inspections.



An accessible, compact fuse box for easy inspection



Centralized design for easy service!

An ideal arrangement of components ensures easy access and convenience during maintenance.



Easy change of air cleaner

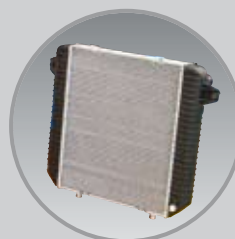
The air filter is readily accessible for cleaning or replacement. (7inch Cyclone Type)



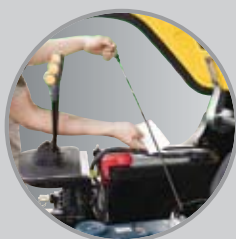
Portable side cover



Rotational battery installation



Aluminum radiator with superb protection against heat

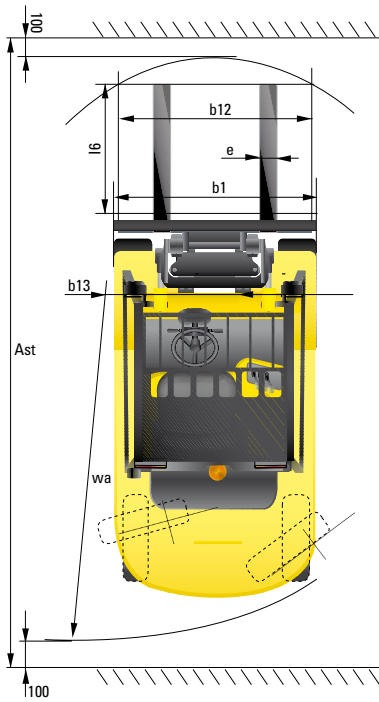
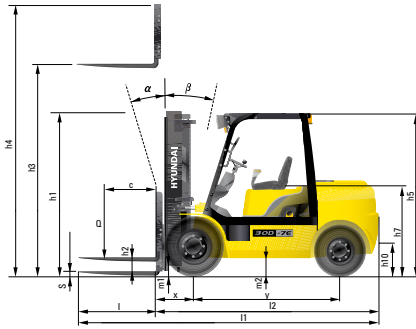


Quick and easy engine oil check



Key-locking fuel cap

Dimensions



Specifications

Identification						
1.1	Manufacturer		Hyundai	Hyundai	Hyundai	Hyundai
1.2	Type		20D-7E	25D-7E	30D-7E	33D-7E
1.3	Drive: electric (battery or mains), diesel, petrol, fuel gas, manual		DIESEL	DIESEL	DIESEL	DIESEL
1.4	Type of operation: hand, pedestrian, standing, seated, order-picker		seated	seated	seated	seated
1.5	Load capacity (standard)	kg	2,000	2,500	3,000	3,300
1.6	Load center distance	c mm	500	500	500	500
1.8	Load distance, center of drive axle to forks	x mm	461	461	464	464
1.9	Wheelbase	y mm	1,650	1,650	1,700	1,700
Weights						
2.1	Service weight (single tire / double tires)	kg	3,604 / 3,708	3,894 / 3,998	4,411 / 4,466	4,823 / 4,882
2.2	Axle loading, loaded front / rear (single tire / double tires)	kg	(4,847 / 757) / (4,992 / 716)	(5,579 / 815) / (5,726 / 773)	(6,450 / 961) / (6,544 / 922)	(6,885 / 1,238) / (6,985 / 1,197)
2.3	Axle loading, unloaded front / rear (single tire / double tires)	kg	(1,683 / 1,921) / (1,818 / 1,890)	(1,623 / 2,271) / (1,759 / 2,239)	(1,748 / 2,663) / (1,836 / 2,630)	(1,713 / 3,110) / (1,806 / 3,076)
Wheels, Chassis						
3.1	Tires: solid rubber, superelastic, pneumatic, polyurethane		pneumatic	pneumatic	pneumatic	pneumatic
3.2	Tire size, front (single tire / double tires)		7.00-12-12PR / 6.00-15-10PR	7.00-12-12PR / 6.00-15-10PR	7.00-12-12PR / 6.00-15-10PR	7.00-12-12PR / 6.00-15-10PR
3.3	Tires size, rear		6.00 - 9 - 10PR	6.00 - 9 - 10PR	6.50 - 10 - 12PR	6.50 - 10 - 12PR
3.5	Wheels, number front / rear (X= driven wheels) (single tire / double tires)		(2x / 2) / (4x / 2)	(2x / 2) / (4x / 2)	(2x / 2) / (4x / 2)	(2x / 2) / (4x / 2)
3.6	Track width, front (single tire / double tires)	mm	965 / 1,152.50	965 / 1,152.50	1,005 / 1,152.50	1,005 / 1,152.50
3.7	Track width, rear	mm	980	980	980	980
Basic Dimensions						
4.1	Mast / fork carriage tilt forward / backward	degrees	6 / 10	6 / 10	6 / 10	6 / 10
4.2	Lowered mast height (standard)	h1 mm	2,175	2,175	2,190	2,190
4.3	Free lift	h2 mm	155	155	155	155
4.4	Lift height (standard)	h3 mm	3,300	3,300	3,300	3,200
4.5	Extended mast height (standard)	h4 mm	4,485	4,485	4,485	4,385
4.7	Overhead load guard (cab) height	h5 mm	2,160	2,160	2,180	2,180
4.8	Seat height / standing height	h7 mm	1,086	1,086	1,106	1,106
4.12	Coupling height	h10 mm	306	306	330	330
4.19	Overall length	l1 mm	3,577	3,632	3,738	3,806
4.20	Length to face of forks	l2 mm	2,527	2,582	2,688	2,756
4.21	Overall width (single tire / double tires)	b1 mm	1,160 / 1,515	1,160 / 1,515	1,230 / 1,515	1,230 / 1,515
4.22	Fork dimensions (hook type)	S x E x L mm	1,050 x 100 x 45	1,050 x 100 x 45	1,050 x 125 x 45	1,050 x 125 x 45
4.23	Fork carriage ISO 2328, class / type A, B		II/ A	II/ A	II/ A	II/ A
4.24	Fork carriage width	b12 mm	1,084	1,084	1,084	1,084
4.31	Ground clearance, loaded, under mast	m1 mm	114	108	118	115
4.32	Ground clearance, centre of wheelbase	m2 mm	185	185	198	198
4.33	Aisle width for pallets 1,000 x 1,200 crossways (L x W)	Ast mm	3,913	3,961	4,057	4,119
4.34	Aisle width for pallets 800 x 1,200 lengthways (W x L)	Ast mm	4,113	4,161	4,257	4,319
4.35	Turning radius	Wa mm	2,252	2,300	2,393	2,455
4.36	Smallest pivot point distance	b13 mm	698	698	724	724
Performance Data						
5.1	Travel speed, unloaded	km/h	18.8	18.8	19.7	19.7
5.2	Lift speed, loaded / unloaded	mm/s	560 / 590	540 / 590	480 / 500	470 / 500
5.3	Lowering speed, loaded / unloaded	mm/s	500 / 450	500 / 450	500 / 450	500 / 450
5.5	Drawbar pull, loaded	kg	2,519	2,541	2,415	2,428
5.7	Gradient performance, loaded / unloaded	%	43.1 / 24.9	37.3 / 22.2	29.9 / 21.0	27.6 / 19.6
5.9	Acceleration time, loaded / unloaded (10 m)		NA	NA	NA	NA
5.10	Service brake		hydraulic	hydraulic	hydraulic	hydraulic
Engine						
6.1	Engine manufacturer / type		KUBOTA V3600	KUBOTA V3600	KUBOTA V3600	KUBOTA V3600
6.2	Engine power acc. to ISO 1585	kW	48	48	48	48
6.3	Rated speed	1/min	2,300	2,300	2,300	2,300
6.4	No. of cylinder / cubic capacity	anz/cm ³	4 / 3,620	4 / 3,620	4 / 3,620	4 / 3,620
6.5	Fuel consumption acc. To VDI cycle	ℓ / h	2.1	2.2	2.5	2.8
Other Details						
8.1	Type of drive control		power shift	power shift	power shift	power shift
8.2	Operating pressure (system / attach)	bar	205 / 170	205 / 170	205 / 170	205 / 170
8.3	Hydraulic oil volume	ℓ	30	30	30	30
8.4	Sound level at driver's ear according to DIN 12053	db (A)	80	80	80	80

Contact your Hyundai dealer for more information. The machine shown may vary according to International standards. All US measurement rounded off to nearest pounds or inches. Materials and specifications are subject to change without notice.

HYUNDAI | MATERIAL HANDLING
HEAVY INDUSTRIES CO., LTD.

Head Office(Sales Office)
1 JEONHA-DONG, DONG-GU, ULSAN, KOREA Tel (82) (52) 202-7970, 7729, 0971 Fax (82) (52) 202-7979, 7720

U.S. Operation : Hyundai Construction Equipment U.S.A., Inc.
955 ESTES AVENUE, ELK GROVE VILLAGE IL, 60007 Tel (1) 847-437-3333 Fax (1) 847-437-3574

European Operation : Hyundai Heavy Industries Europe N.V.
VOSSENDAAL 11, 2440 GEEL, BELGIUM Tel (32) 14-562200 Fax (32) 14-593405-06

India Operation : Hyundai Construction Equipment India PVT., Ltd
PLOT NO.A-2, CHAKAN INDUSTRIAL AREA, VILL.- KHALUMBRE.
TALUK.- KHED., DIST.- PUNE 410 501, INDIA Tel (91) 21-3530-1700 Fax (91) 21-3530-1712

PLEASE CONTACT